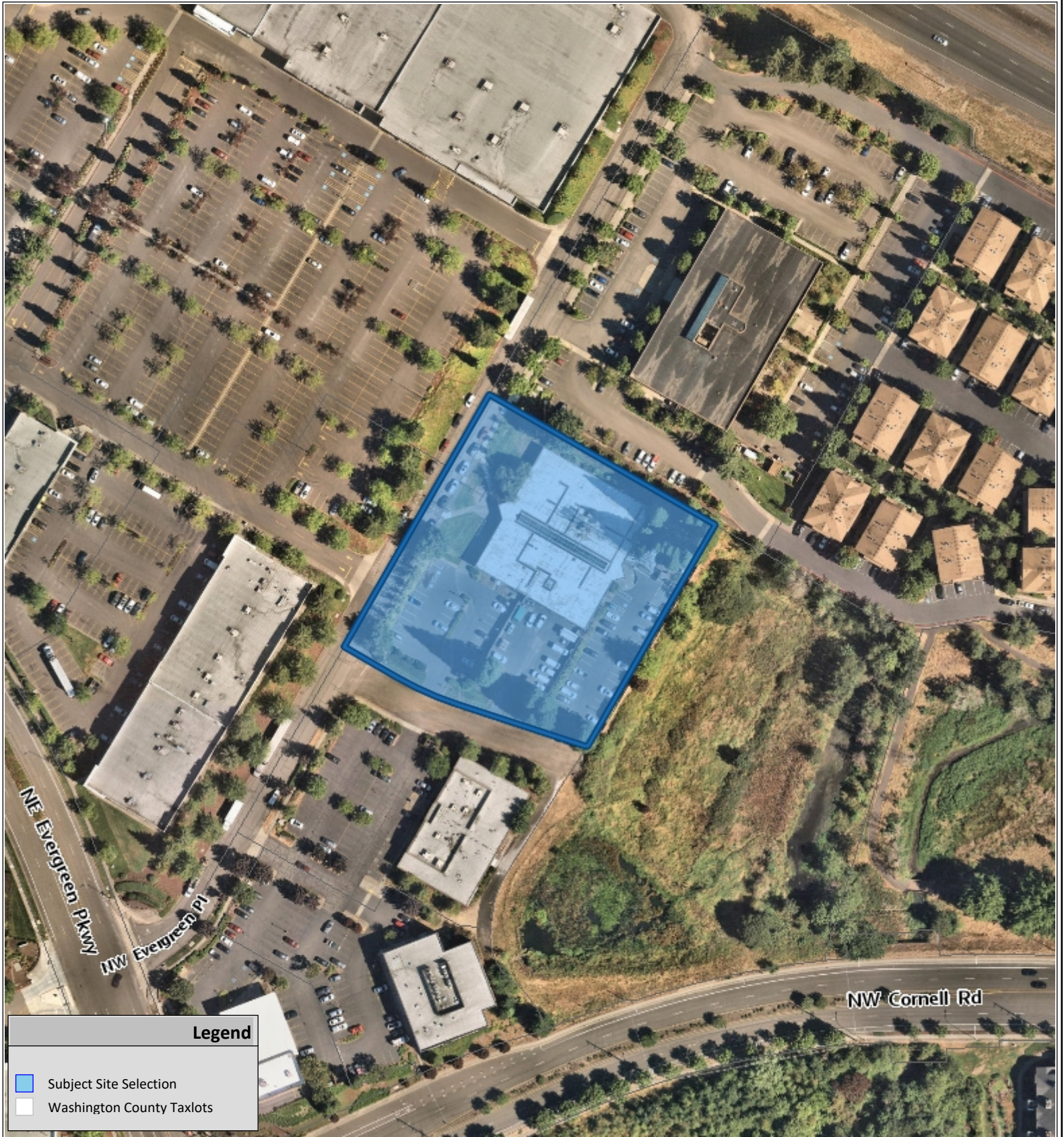


VICINITY MAP



Legend

- Subject Site Selection
- Washington County Taxlots



LU32023-00356 CATT Intensive Service Building
(CUN32023-00346/CUN32023-00347/DR32023-00348/TP22023-00351)

COMMUNITY DEVELOPMENT DEPARTMENT
Planning Division

The information supplied in this application represents the best data available at the time of publication. City of Beaverton GIS makes no claims, representations, or warranties as to its accuracy or completeness.

10/09/2023

Taxlot No:
1N130CD00203

Application #
See Notice